

registration fees

Advanced registration on or before January 15, 2000:

Fee A: Standard \$65.00

Fee B: Student \$40.00

Registration after January 15, 2000:

Fee C: Standard \$85.00

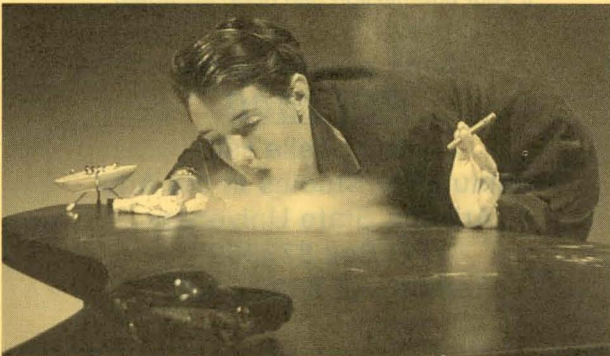
Fee D: Student \$50.00

additional charges

Additional tickets may need to be purchased for some performance events and excursions.

disability resources

Arizona State University has excellent disability resources. Conference participants should notify Fred Corey (480-965-5061) of any special needs.



accommodation

The Twin Palms, Tempe is the host hotel of PSi2000. The first 70 conference participants to register will receive the special conference rate of \$129 per night. The Twin Palms provide a 24-hour airport shuttle, 24-hour room service, and full access to the ASU recreation center.

Twin Palms

225 East Apache Blvd.
Tempe, AZ, 85281
1-480-967-9431

travel

Participants are invited to book their trips through the ASU American Express Travel Office.

Within the United States call toll free:

1-888-814-2993

Outside the United States call:

1-480-965-8410

Phoenix Sky Harbor International airport is 15 minutes drive west of the ASU campus.

additional tourist information

Once registered, conference participants will receive an additional brochure detailing local restaurants, additional hotels and other tourist information.

PSi 2000 Steering Committee

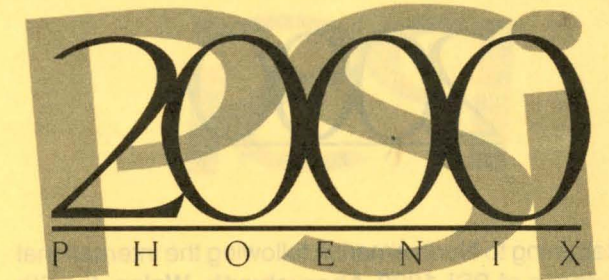
Fred Corey (Communication)

Bonnie J. Eckard (Theatre)

Leslie Hill (ISA/Theatre)

Arthur Sabatini (Interdisciplinary Arts)

Kristin Bervig Valentine (Communication)



Visceral & Virtual

performance from myth to millennium

March 9-12, 2000

Arizona State University

Performance Studies International and Arizona State University Departments of:

- ◆ Communication
- ◆ Interdisciplinary Arts and Performance, ASU West
- ◆ Theatre, and
- ◆ Institute for Studies in the Arts

are pleased to announce the **6th annual PSi conference**.

For further information, please contact:

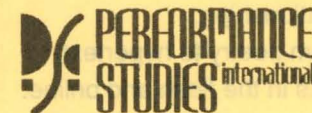
Leslie Hill -- Institute for Studies in the Arts

Arizona State University

PO Box 873302, Tempe, AZ 85287-3302

fax: 480.965.9438 phone: 480.965.3447

email: lhill@asu.edu <http://com.pp.asu.edu/psi/>



2000
P H O E N I X

Returning to North America following the international success of **PSi 1999, Aberystwyth, Wales**, the 6th conference focuses its attention on the visceral and the virtual in performance. Arizona State University welcomes the conference to its campus, one of the most apt and dynamic environments for these explorations. This is reflected not only in the irresistible pairing of 'Phoenix' and '2000', but in the outstanding reputations and resources as well as the interdisciplinary nature of our hosting departments: **Department of Communication, Interdisciplinary Arts and Performance - ASU West, Department of Theatre** and the **Institute for Studies in the Arts (ISA)**. With substantial contributions from these departments, as well as the support of the ISA, an internationally renowned research institution, ASU promises to provide a highly charged atmosphere for cross-disciplinary exchange as well as state-of-the-art facilities for the showcasing of important contemporary performance work.

The **6th annual Performance Studies Conference** will focus on exploring the visceral and virtual in performance. As we attempt to take a millennial pulse of the **past, present and future** of performance, conference participants are invited to explore issues touching on one or more of the following areas:

- ◆ the body in performance;
- ◆ performance and technology;
- ◆ the ephemerality of live work and the changing nature of documentation;
- ◆ performance venues, 'real' and 'virtual';
- ◆ interactive performance and the evolution of performer/audience relationships;
- ◆ performative writing, from poetry to hypertext; and performance studies in the flesh and online.

PERFORMANCE
STUDIES international

The **Performance Studies Conference** was launched by the *Department of Performance Studies* at *New York University* in **1995**, and was subsequently hosted by:

- ◆ *Northwestern University, Evanston (1996)*
- ◆ *Georgia Institute of Technology, Atlanta with New York University (1997)*
- ◆ *City University of New York (1998)*
- ◆ *Centre for Performance Research with University of Wales, Aberystwyth (1999)*

In the five years of its existence, the conference has gained a reputation for staging gatherings that attract a wide range of scholars and artists. Its successful coalition of the diverse field of performance studies has resulted in the formation of a new membership association, **PSi Performance Studies International**, under whose auspices the conferences are now organized.



Acknowledgement: the conference title *visceral and virtual*, is borrowed from the doctoral thesis of Helen Paris, University of Surrey, 1999.

Proposals

We invite **artists, scholars and technologists** from a diverse range of backgrounds who are engaged in current practice and debate on performance. Proposals are welcomed for a **variety of presentation formats**, including: performances, workshops, installations, exhibitions, site specific and/or durational work, video, film, performance photography, CD-ROM demos, web café, interactive media, roundtable dialogues, demonstrations, and presentations. We encourage participants to take a creative approach to their conference presentations with the aim of producing a **performative performance conference**.

Collaborative proposals are welcomed.

Proposals should be sent in the form of a 250 word draft abstract / project description, including an estimate of duration and technical needs. Where directly relevant to the proposal, we welcome supplementary materials such as video, CD-ROM, scripts, photos etc. Please include your personal details, and, if you are affiliated to an institution, the address and contact number of that organization and state your preferred mode of contact: mail, fax or email. To help determine the linguistic policy of the conference, please let us know in which language you would ideally like to give your presentation.

Proposals should reach us no later than:

October 1, 1999

You will be notified by the beginning of November 1999 if your submission has been accepted.

Send proposals to:

PSi 2000

attn: Leslie Hill

Institute for Studies in the Arts

Arizona State University

PO Box 873302

Tempe, AZ 85287-3302

<http://com.p.p.asu.edu/psi/>