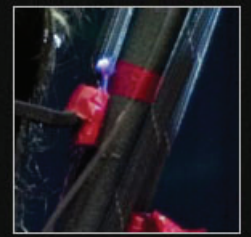
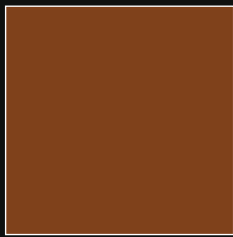
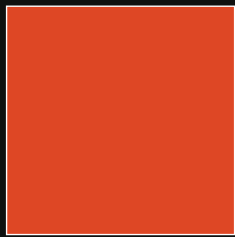
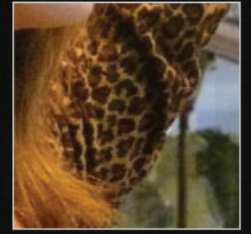
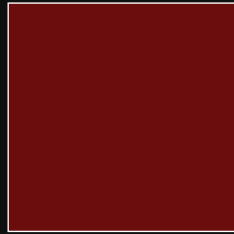
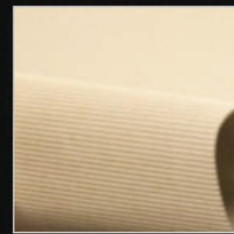
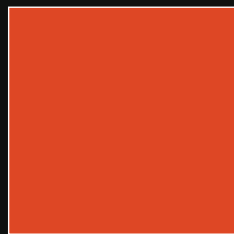
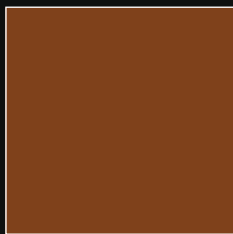
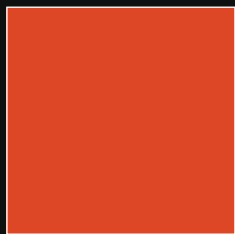
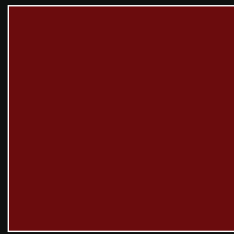


PSi#18

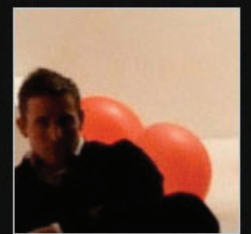
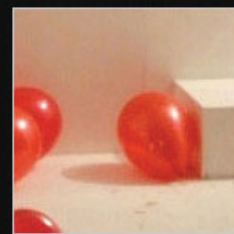
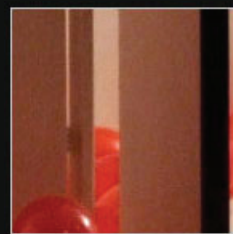
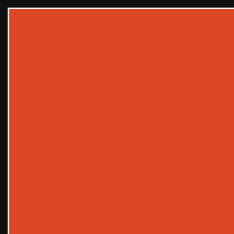
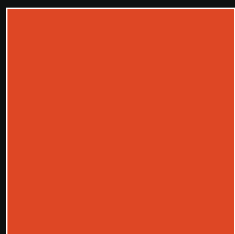
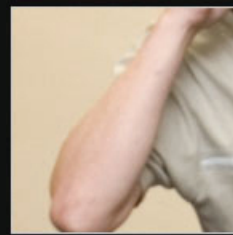
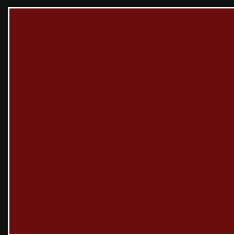
performance :: culture :: industry



University of Leeds, UK

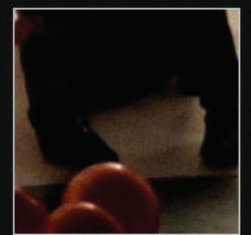
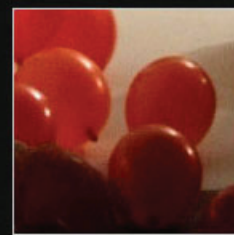
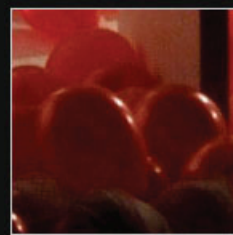


27 June -
1 July 2012



PSi#18

performance :: culture :: industry





Welcome to P*Si*#18

The conference theme was developed to reflect and explore the complex interaction between 'performance', 'culture' and 'industry'. And over the year of planning for the conference, the accelerating crisis in neoliberalism has lent further urgency to the issues. At the heart, perhaps, is the recognition that there is often a fundamental tension between cultural value and economic value; and that the conditions under which performance is made usually demand that this tension is accommodated somehow. We do not propose that it is a simple matter of binaries: culture/industry, intrinsic value/instrumental value – or indeed ecology/economy. Rather, we want to locate this debate within wider and contemporary cultural and economic concerns in order to look at where the future of performance studies – in its various manifestations - may lie. Responses to the call were inventive and imaginative and the programme comprises a rich range of ways – through shifts, panels, roundtables and plenaries - to engage and stimulate debate from a variety of perspectives.

The annual P*Si* conference usually takes place alongside an existing festival of international, contemporary performance. Whilst Leeds is rich in cultural events and networks of contemporary art and performance, up until now there has not been such a festival. But the opportunity of P*Si* coming to Leeds served as the catalyst to inaugurate one. We have created a partnership between the University and some of the key cultural providers in Leeds - principally Opera North, West Yorkshire Playhouse, Leeds City Council, Yorkshire Dance and the Yorkshire International Performing Arts Network - to develop Ludus Festival Leeds. We intend to build on the relationships that have been established to make Ludus a sustainable, biennial event. So Ludus is not simply a festival for the conference, but, as the name suggests, we hope that conference delegates, alongside citizens of Leeds, will enjoy the various playful ways in which the festival seeks to engage a wide range of audiences. The international programme has been developed through research and consultation with the Centre for Performance Research.

The P*Si* conference coming to Leeds has, then, lent impetus to a deeper engagement between University of Leeds and the cultural life of the city of Leeds. In addition to the innovation of Ludus Festival Leeds, the 'porous' shifts which are part of the conference are also available to a wider audience: they allow the work of the conference to resonate beyond the campus and across the city.

**Joslin McKinney and Mick Wallis, P*Si*#18 conference directors
School of Performance & Cultural Industries, University of Leeds**

PSi#18 theme and tracks

performance :: culture :: industry

We invite academics, artists and other practitioners to debate, develop, contest and celebrate the relationships between culture, industry and performance – now, in the past, and in possible futures. We have the following areas in mind; and our minds are open to more:

Value and efficacy track

What are the synergies and contradictions between economic and cultural value in the field of performance? How can these be understood in terms of performance? Can we distinguish intrinsic from instrumental value? What, in our various circumstances, are the problematics of both defining and measuring cultural and economic efficacies of performance practice? What methodologies and rhetorics do and might we deploy?

Commercial and amateur track

How is the commercial stage being addressed from within the performance studies frame? How is amateur performance being addressed from within the performance studies frame?

Cultural articulations track

How has performance addressed and how is it addressing the various alienations, needs, gains and negotiations associated with economic, cultural and refugee migration? How do economic conditions co-determine how cultural identities are performed, negotiated and resisted through performance? What is the present, past and future of cultural performance? What are the present and future possibilities for performance practice and understanding across cultures? Or against cultural boundary-making itself?

Relations and determinations 'track'

How do economic and cultural drivers determine the relationship between the academy and performance practice beyond its walls? What effects is the change in the global economic landscape having on performance studies? How has performance engaged, and how does it and might it engage, with the several cultural industries? What has performance studies to contribute?

Training, labour and innovation track

Where and how does performance practice develop; and what are the cultural and economic drivers? What are the relationships between and within the academic and industrial spheres in the training of professionals, including performers, directors, scenic artists and technicians? What is the present and future of vocational performer training conducted outside educational systems – e.g. within the family?

Economy / Ecology track

How has, does and might performance engage with concerns around environmental change and ecological impact? How might a performative focus on landscape, locality or habitus enable us to rethink the relationship of the personal, the economic, the political and the ecological?

PSi#18 programme design

As is usual at a PSi conference, there is much more to see and do than is possible in the five days of the conference. One way to plan your conference experience might be to follow a particular track – or to plot a course across tracks. In each of the 11 parallel sessions, events are grouped according to track and listed alphabetically within the track; and the short abstracts booklet provides more detail on the events and their presenters. Longer abstracts for each of the events can be found on our website: www.psi18.org.

We have tried to keep to a maximum of three papers per 90 minute session to allow for plenty of time for reflection and questions, although some presenters have devised other methods to stimulate discussion (roundtables for example) and a few of the curated panels will run for up to 2 hours (these exceptions are noted in the programme).

Some of the sessions are happening over the lunch break. You will be able to book a packed lunch in advance (ask at the Help Desk).

Any changes to the published schedule will be posted daily to twitter and at the help desk in Parkinson Court.

Scratch seminars: We hope that being at the conference will inspire new conversations and exchanges between delegates. To help this happen we will have a 'scratch' seminar space which will be available for delegates to book for up to 90 minutes at a time during the conference. Please see www.psi18.org for details – or ask at the conference help desk.

Virtual PSi#18

Various virtual means have been established to supplement and facilitate face-to-face discussion, before, during and after the conference:

- You will be able to revisit the plenary events on Wednesday, Thursday and Friday through podcasts posted to the website the next morning or afternoon.
- You can share digital material pertinent to the conference theme through our website. Please upload it to an appropriate file / media sharing service (such as YouTube, Vimeo, YouSendIt, DropBox, SendSpace etc.) and e-mail the hyperlink to psi18@leeds.ac.uk together with a brief description of the content quoting 'hyperlink' in the subject line.
- You can also continue discussions through the blog or through twitter. If you wish to contribute a new blog post, please e-mail the text to psi18@leeds.ac.uk, quoting 'blog post' in the subject line. Please be aware that blog posts, comments and other material will be subject to the conference moderation policy (as set out in the April newsletter and here in full: <http://www.ja.net/documents/publications/policy/aup.pdf>)

If your wireless device is already connected to 'eduroam', you will be able to connect to the University of Leeds wireless service without having to take any further steps. Meanwhile, University of Leeds login details are available to all delegates at registration. There is good wireless coverage on campus. And delegates will have access to a PC cluster in Parkinson building, room B25.

Sustainability

Wherever possible we have endeavoured to consider sustainability and the environment in the planning and production of PSi#18. The paper we are using for all printed materials is recycled and the conference bags for delegates are also made from recyclable materials. Recycling points for paper, cans and plastic are available in all University conference venues and additional points for glass collection can be found adjacent to the precinct area on campus.

Welcome from the PSi president

'Exclusive: New Greek PSI haircut around 30-50 percent' announced Reuters.com shortly before our Regional Research Cluster event *Encounters in Synchronous Times* in Athens last November. PSi, so it appeared, was prominently present in the media coverage of the developments in Greece. The 30 to 50 percent PSI haircut refers to the role of private sector investment in the restructuring of the financial sector. The article at Reuters explains how 'under a voluntary debt restructuring deal private creditors would end up taking a loss of about 21 percent in the net present value of their Greek bond holdings—what is called a “haircut”—contributing an estimated 50 billion euros on a net basis through mid-2014.' Private sector investment and Performance Studies international: quite an encounter in synchronous times.

We Cut Heads is the name of a place in Amsterdam that is a combination of gallery, hairdresser, stylist and fancy hangout, and all at the same time. *We Cut Heads* offers maximum performance designed to meet the needs of the contemporary consumer. *We Cut Heads* (1983) is also the title of the film that was Spike Lee's masters thesis at the Tisch School of the Arts in New York. This film is set in a barbershop where customers come to hang out, discuss, and maybe get a haircut, or not. It is a place that is about many things but consumerism and maximized performance. The manager, Zack, took over this business after his predecessor Joe was killed by a gangster who used the shop to cover up mafia activities. Zack wants to keep the shop legitimate but the gangster wants to continue the deal he had with Joe. *We Cut Heads* thus describes the double identity of the shop, and reads as the threat posed to the shop owner trying to protect his business—cutting hair—from a power network trying to do its own business through his shop. A system that cuts heads.

From private sector investment to a fancy hairdresser in Amsterdam to a Spike Lee movie to Performance Studies international, a set of connections emerges, pointing towards the complex relationships between culture, industry and performance: the relationships PSi#18 invites us to think about. The Call for Proposals raises important questions about the relationships between economic and cultural values, the economic efficacies of performance practice and the performance of cultural industry, the relationship between economy and the performance of cultural identity, the relationship between bodily praxis and economic organization, and many more.

I want to thank Mick Wallis and Joslin McKinney and their amazing team for putting these urgent issues on the PSi agenda, and for all the hard work they invested in organizing this exciting event. Having been the organizer of last year's conference, I am fully aware of what it takes to organize an event as encompassing, rich, and complicated as they are presenting to us. And as if organizing a PSi conference is not enough already, they also initiated and curated a new performance festival next to it. An incredible achievement.

I am looking forward to sharing these rich offerings with you during the days to come and I cannot say how happy I am that this year I only have to arrive in time and enjoy.

Maike Bleeker,
PSi President

12:00 – 17:00
Parkinson Court

REGISTRATION

14:00 – 16:00
Conference Auditorium

‘OPENINGS’ PLENARY

14:00 – 15:00

The magnificent vision and the political heart of Geraldine Connor, musician, actor, composer, theorist and cultural activist

Griselda Pollock, *Professor of the Social & Critical Histories of Art, University of Leeds, UK*

15:00 – 16:00

Feminist performance: legacies and futures

Bobby Baker

with

Sarah Bay-Cheng, Associate Professor & Director of Graduate Studies in Theatre, University at Buffalo, USA

Dee Heddon, Dean of Graduate Studies and Reader in Theatre Film and Television Studies, University of Glasgow, UK

Gerry Harris, Professor of Theatre Studies, Lancaster Institute for the Contemporary Arts, Lancaster University, UK

Jenny Lawson, Lecturer in Performing Arts, Northumbria University, UK

Roberta Mock, Professor of Performance Studies, Faculty of Arts, Plymouth University, UK

Christel Stalpaert, Professor in Theatre, Performance and Media Studies, Ghent University, Belgium

Nicola Shaughnessy, Senior Lecturer in Drama and Theatre Studies, University of Kent, UK

18:00 - 23:30
Saviles, Armouries Square,
Armouries Drive, Leeds
LS10 1LT

CONFERENCE DINNER

18:30 Buffet (until 19:50)

19:00 - 19:15 Welcome address

Joslin McKinney and Mick Wallis, PSi#18 conference directors;

Professor Dawn Freshwater, Pro-Vice-Chancellor for Staff and Organisational Effectiveness, University of Leeds;

Councillor Adam Ogilvie, Executive Member for Leisure, Leeds City Council

20:00 Performance: *The Price of Everything*, Dan Bye

20:45 Dancing

23:30 close

Thursday 28 June

Registration & Helpdesk Parkinson Court 8:00 - 17:00

9:00 – 9:30

Opening remarks

9:30 – 11:00

Plenary panel

Conference Auditorium

Ecologies of performance

Peter Eckersall, Associate Professor of Theatre Studies, School of Culture and Communication, University of Melbourne, Australia

Dominic Gray, Projects Director, Opera North, Leeds, UK

Michael van Graan, Executive Director, African Arts Institute, Cape Town, South Africa

Chair: Jisha Menon, Assistant Professor of Drama, Stanford University, USA

11:00 – 11:30

Parkinson Court

BREAK - REFRESHMENTS

Exhibition

Cao Yu – Pioneer of Modern Chinese Drama

*Clothworkers Centenary Hall Foyer, University of Leeds
Wednesday 27 June – Sunday 1 July 2012*

This photographic exhibition displayed on twenty banners is a presentation on China's foremost dramatist, Cao Yu (1910-1996). From his experience of the greatest upheavals in the history of 20th century China, Cao Yu's life and career exemplify the dilemmas and difficulties faced by generations of Chinese intellectuals, offering a vivid narrative of modern China. The exhibition also illustrates how 'spoken drama', originating as an imported form of Western drama in contrast to China's indigenous song-dance theatre, has succeeded in establishing its own identity as a popular genre among today's young people.



Thursday 28 June

Registration & Helpdesk Parkinson Court 08:00 - 17:00

11:30 - 13:00

Articulations

Shift

Parkinson Court, Room 18

PARALLEL SESSIONS 1.1

Carpe Minuta Prima (11.30-18.00) Brian Lobel (UK)/Michelle Castaneda (UK) /Andrew Bill Roberts (UK)

Articulations

Curated panel

Baines Wing 2.37

National performance as cultural industry: performing Irish identity panel 1 Aoife Monks (UK) /Mark Phelan (UK)/ Aoife McGrath (Ireland)

Articulations

Curated panel

Michael Sadler, Rupert Beckett LT

New ecologies of Butoh: expanding and exploding 'cultural' articulations Hayato Kosuge (Japan)/ Takashi Morishita (Japan) /Yu Homma (Japan) /Katherine Mezur (USA)

Articulations

Paper panel

Music LT1

Performing humanity (conflict/healing through performance) Emma Willis (New Zealand) / James Thompson (UK) Chair: Helen Nicholson

Articulations

Paper panel

Music LT2

The economy of culture Maryrose Casey (Australia)/ Meike Wagner (Germany)/ Margherita Laera (UK) Chair: Joanne Zerdy

Articulations

Shift

Parkinson Court

Whakaahuatia: the way we colour our mana: the way we labour our waewae Mark Harvey (New Zealand) / Te Oti Rakena (New Zealand) / Cat Ruka (New Zealand) / Raukura Turei (New Zealand) / Nanako McIntosh Uchida (New Zealand)

Commercial

Roundtable discussion

Baines Wing 3.06

Rethinking academic performance: industry, culture, pedagogy
Moderator: Lindsey Mantoan (USA)

Ecology

Shift

stage@leeds foyer

Ecologies of siting: a durational attractor for (re)distributed attention Alanna Thain (Canada)/ Christoph Brunner (Canada)/ Bianca Scliar (Canada)

Ecology

Paper panel

Parkinson B.10

Performance, place and economics Caroline Smith (UK) /Lisa Vinebaum, (USA) / Alexa Taylor (Australia) Chair: Matt Hawthorn

Ecology

Shift

Parkinson, Centenary Gallery

Sentimental Constructions: an ethico-aesthetics of collaboration
Stephanie Springgay (Canada) / Nathaniel Stern (USA) / Nicole Ridgway (USA)

Ecology

Curated panel

Michael Sadler LG.15

Shakespearean performance economies / Shakespearean performance ecologies Peter Marx (Germany) / and Aneta Mancewicz (UK) / Katy Alexander (Australia).

Thursday 28 June

Registration & Helpdesk Parkinson Court 08:00 - 17:00

Relations

Paper panel

Parkinson B.08

Cultural identity and heritage Marisa Keuris (South Africa) /Cassandra Duell (Australia)/ Chair: Johanna Householder

Relations

Shift

Parkinson Court

What is it Worth? (Market-based memory) (11.30-18.00) Jeff McMahon (USA)

Training

Curated panel

Clothworkers South G.14

'A proper actor'? The politics of training for learning disabled actors Emma Gee (UK)/Matt Hargrave (UK)/Tim Wheeler (UK)/Alan Clay (UK)/Jez Colbourne (UK)/Ana Marie Heslop (UK)

Training

Curated panel

Baines Wing, Miall LT 2.34

Beyond training :: event experience in education Dorita Hannah (New Zealand) / Beth Weinstein (USA) /Rodrigo Tisi (Chile) / Kathleen Irwin (Canada) / Lise Brenner (USA)

Training

Paper panel

Parkinson B.11

Materialities and threads Helene Vosters (Canada) / Joshua Lubin-Levy (USA) Chair: Elyssa Livergant,

Training

Shift

Clothworkers South G.11

Training : Ideology : History (closed session)

Value

Shift

Clothworkers South 2.03

Choreographing calculation Jasmina Založnik (Slovenia)/ Pia Brezavšček (Slovenia) / Nika Arhar (Slovenia) / Katja Čičigoj (Slovenia) / Saška Rakef (Slovenia)

Value

Paper panel

Parkinson B.09

Evaluations and efficacies Andrew Ormston (UK) / Ben Walmsley, (UK) / Barbara Orel (Slovenia) Chair: Calvin Taylor

Value

Shift

stage@leeds, Alec Clegg studio

How to catch a dog in a bucket Eirini Kartsaki (UK)/Joe Kelleher (UK)

Value

Paper panel

Music LT3

Tourism, pilgrimage and heritage Zoe Reeve (South Africa) / Phil Smith (UK)/ Peter O'Rourke (UK)/ Chair: Anna Upchurch

Value

Paper panel

Music LT4

Uncanny potentials Elaine O'Sullivan (UK)/ Aliza Shvarts (USA) / Natasha Lushetich (UK) Chair: Jennifer Parker-Starbuck

13:00 - 14:30

LUNCH BREAK

13.00 -16.00

Value

shift

University Square Precinct

Ten Cents a Dance: Serve/Us Economy

Alison Matthews (UK)

13.00 - 21.00

Ecology

shift

St. Georges Field

Earthrise Repair Shop – Meadow Meander Baz Kershaw (UK)

13.15 - 14.15

Parkinson B.09

'Meet the Editors': how to get published in the *Journal of Theatre, Dance and Performance Training*

13:15 - 14:15

Parkinson Centenary
Gallery

The Drama Review - Publisher's Book Launch

LUDUS FESTIVAL LEEDS

Ludus Festival Leeds is a new venture in contemporary performing arts that celebrates Leeds as an international centre of excellence in theatre and performance. Leeds-based artists, producers and venues have come together with an exciting mix of renowned artists from around the world. Leeds residents and visitors alike can look forward to performances, installations and street theatre across the City centre and online.

13.15 - 13.55

The Edge

Synchronised Balbir Singh Dance Company

16.30 - 18.15

meet in Parkinson Court

City Walk Yorkshire International Performing Arts Network

19.30 - 21.00

Howard Assembly Room

Ganapati Adishakti

See <http://www.ludusfestival.org/> for details of the full Ludus programme and for booking



UNIVERSITY OF LEEDS



If the Games were for Conferences and Events, we'd probably win.



Great things are about to happen in London next year, but great things are already happening in Leeds now! Meet in Leeds have raised the bar in conference facilities and understand that organising any event takes time and energy. Our team has a winning mentality, delivering the best possible result every time. Specially trained staff go the extra mile to make every meeting a resounding success. Choose The University of Leeds for your next event – you'll definitely end up a winner.

www.meetinleeds.co.uk/refreshing

www.facebook.com/meetinleeds www.twitter.com/meetinleeds

t: 0113 343 6100 e: enquiries@meetinleeds.co.uk



FACULTY OF HUMANITIES
UNIVERSITY OF COPENHAGEN

Thursday 28 June

Registration & Helpdesk Parkinson Court 08:00 - 17:00

14:30 - 16:00

PARALLEL SESSIONS 1.2

Articulations

Shift

Parkinson, Room 18

Carpe Minuta Prima performances (11.30-18.00) Brian Lobel (UK)/
Michelle Castaneda (UK)/Andrew Bill Roberts (UK)

Articulations

Curated Panel

Michael Sadler LG.15

Connected communities? relational performances and cultural (in) articulations Gerry Harris (UK)/Sally Mackey (UK)/Jane Milling (UK)/
Roberta Mock (UK)

Articulations

Roundtable

Michael Sadler LG10

Kai tāima/korero tāima: fill me up Mark Harvey (New Zealand) Te
Oti Rakena (New Zealand)/Cat Ruka Manukau (New Zealand)/Nanako
McIntosh (New Zealand)/Raukura Turei (New Zealand)

Articulations

Paper panel

Parkinson B.09

Medicalizing performance Lisa Erdman (Finland)/ Kati Sweaney (US)/
Chair: Mark Phelan

Articulations

Curated panel

Baines Wing 2.37

National performance as cultural industry: performing Irish identity panel 2 Mary Ann Bolger (Ireland)/ Lionel Pilkington (Ireland)

Articulations

Shift

Baines Wing 3.06

Nightwalks with Teenagers introductory talk (14.30-15.30)
Stephanie Springgay (Canada)/Darren O'Donnell (Canada)/ Saniya
Ansari (Canada)

Articulations

Roundtable

Michael Sadler LG.19

Somebody's other – crossing cultures in performance practice
Martin Welton (UK)/Christopher Bannerman (UK)/Steffi Sachsenmeier
(UK)

Commercial

Paper panel

Parkinson 1.08

Amateur as a strategy of resistance Johanna Linsley (UK)/ Stefan
Aquilina(Malta)/Chair: Susan Daniels

Ecology

Shift

St. Georges Field

Earthrise Repair Shop – Meadow Meander (13.00 -21.00)
Baz Kershaw (UK)

Ecology

Paper panel

Parkinson B.11

Performing environmental risk Christel Stalpaert (Belgium)/ Tamara
Ashley (UK)/ Simone Hancox (UK)/ Chair: Christoph Brunner

Ecology

Paper panel

Music LT4

Performing urban architecture Scott Palmer (UK)/ Gillian Dyson (UK)/
Chair: Dorita Hannah

Relations

Curated panel

Parkinson B.08

Business models and art organisations Balbir Singh (UK)/ Titania
Hanrahan (UK)

Thursday 28 June

Registration & Helpdesk Parkinson Court 08:00 - 17:00

Relations

Curated panel

Michael Sadler, Rupert Beckett LT

Live art and performance in history and the politics of inclusion

(14.30-18.00) Amelia Jones (Canada)/Alpesh Patel (USA)/Meiling Cheng (USA)/Jane Chin Davidson (USA)/ Jacek Kolasiński (USA)/Lisa Newman (UK)/Sanaz Razi (UK)/ Marin Blažević (Croatia)

Relations

Shift

stage@leeds, Dance Studio

The industry of forgetting

Maria Hetzer (UK)/ Cara Berger (UK)/

Awelani Moyo (UK)/ Maiada Salfiti (UK)/ Iwona Hrynczenko (UK)

Relations

Shift

Parkinson Court

What is it Worth? (Market-based memory) (11.30-18.00)

Jeff McMahon (USA)

Training

Paper panel

Parkinson B.10

Labour, training and innovation in live and performance art 1

Deirdre Heddon (UK)/ Pilvi Porkola (Finland)/ Heike Roms (UK)/ Chair: Frank Camilleri

Training

Paper panel

Music LT2

The artist as worker/producer 1

Serap Erincin (USA)/ Elisa Belem (Brazil)/ Gabriel Levine (Canada)/ Chair: Kat Low

Value

Curated panel

Baines Wing, Miall LT 2.34

Black currencies and black currents: (re)valuing the performance of blackness in symbolic and material industries

Jakeya Caruthers (US)/ Isaiah Wooden (USA)/ Cecilio Cooper (USA)

Value

Curated panel

Music LT1

Self-gratifiers: feminist appropriations in the performances of

Narcissister and Ann Liv Young (14:30-16:30)

Ariel Osterweis (USA)/ Anna Fisher (USA)/ Isabelle Lumpkin (USA)/ Ann Liv Young (USA)/

Lucian Gomoll (USA)

Value

Shift

University Square Precinct

Ten Cents a Dance: Serve/Us Economy (13.00 -16.00)

Alison Matthews (UK)

Value

Shift

Music LT3

Wulfrunian futures presents: why not Wolverhampton?

Tom Richards (UK)/ Jack Richards (UK)/ Bill Brookhouse (UK)/ Alex

Hogan (UK)

Meeting

Michael Sadler LG.17

Intermediality Working Group meeting (14.30-18.00)

Convenors: Sigrid Merx (Netherlands)/ Andy Lavender (UK)

16:00 - 16:30

Parkinson Court

BREAK - REFRESHMENTS

Thursday 28 June

Registration & Helpdesk Parkinson Court 08:00 - 17:00

16:30 - 18:00

PARALLEL SESSIONS 1.3

Articulations

Shift

Parkinson Court, Room 18

Carpe Minuta Prima performances (11.30-18.00) Brian Lobel (UK)/
Michelle Castaneda (UK)/Andrew Bill Roberts (UK)

Articulations

Paper panel

Parkinson B.08

Cultural policy and cultural identity Klaas Tindemans (Belgium)/
Keren Zaiontz (UK) /Robert De Guzman (UK)/ Chair: Maria
Chatzichristodoulou

Articulations

Shift

Clothworkers South 2.03

Encounters in a-synchronous time – a post-cluster shift
Konstantina Georgelou (Netherlands)/Danae Theodoridou (UK)/Efrosini
Protopapa (UK)

Articulations

Curated panel

Baines Wing Miall LT 2.34

The precarity of mobility: performance, labour and movement Mick
Douglas (Australia)/Fiona Wilkie (UK)/Martin Welton (UK)

Commercial

Paper panel

Parkinson 1.08

Amateur participation Joy Brooke Fairfield (USA)/ Andrew Jones
(USA)/ Elena Perez (USA)/ Chair: Susan Daniels

Ecology

Shift

St. Georges Field

Earthrise Repair Shop – Meadow Meander (13.00 -21.00)
Baz Kershaw (UK)

Ecology

Paper panel

Michael Sadler LG.15

Eco-critical landscapes Matt Hawthorn (UK)/ Carolina E. Santo
(France)/ Lisa Moren (USA)/Chair: Tanya Augsburg

Ecology

Paper panel

Music LT4

Theorising eco-performance Gareth Somers (UK)/Tuija Kokkonen
(Finland)/Sozita Goudouna (UK)/ Chair: Carl Lavery

Relations

Curated panel

Michael Sadler Rupert

Beckett LT

**Live art and performance in history and the politics of inclusion
(14.30-18.00)** Amelia Jones (Canada)/Alpesh Patel (USA)/Meiling Cheng
(USA)/Jane Chin Davidson (USA)/ Jacek Kolasiński (USA)/Lisa Newman
(UK)/Sanaz Razi (UK)/ Marin Blažević (Croatia)

Relations

Paper panel

Parkinson B.11

Outside performance studies Jan Suk (Czech Republic)/ Peta Tait
(Australia)/ Chair: Peter Eckersall

Relations

Shift

Parkinson Court

What is it Worth? (Market-based memory) (11.30-18.00) Jeff
McMahon (USA)

Thursday 28 June

Registration & Helpdesk Parkinson Court 08:00 - 17:00

Training
Paper panel
Parkinson B.10

Labour, training and innovation in live and performance art 2
Anja Lindelof (Denmark)/ Eser Selen (Turkey)/ Nikolas Wakefield (UK)/
Chair: Calvin Taylor

Training
Paper Panel
Music LT2

The artist as worker/producer 2 Brian Schultis (USA)/ Raegan Truax-
O’Gorman (USA)/ Chair: Kay Hepplewhite

Training
Shift
Clothworkers South G.14

**Work songs: exploring immaterial and emotional labour as
performance material** Broderick Chow (UK)/ Tom Wells (UK)/Louise
Owen (UK)

Value
Shift
stage@leeds, Alec Clegg
studio

Autism Affects Melissa Trimmingham (UK)/ Nicola Shaughnessy (UK) /
Mary Jane Stevens (UK) / Gemma Williams (UK) / Emma Greenslade
(UK)

Value
Shift
TV studio

Graduate Student shift: playmachineplay Coordinator: Steph
Berntson (Canada)

Value
Paper panel
Music LT3

Urban and post industrial contexts Johanna Dangel (Switzerland)/
Immanuel Schipper (Switzerland)/ Charlotte Bell (UK)/ Paulina Popek
(Poland)/ Chair: Katie Beswick

Meeting
Michael Sadler LG.17

Intermediality Working Group meeting (14.30-18.00) Convenors:
Sigrid Merx (Netherlands)/ Andy Lavender (UK)

Professional development
Michael Sadler LG.19

**The industry of performance studies: a professional development
session sponsored by the Emerging Scholars Committee and
Graduate Students Committee** Joshua Edelman (UK)/ Mechtild
Widrich (Switzerland)

Clothworkers South G.11

Porous Studio: A project of the Artists Committee (16.30-19.30) Ray
Langenbach (Malaysia)/ Nicholas Johnson (Ireland)

THURSDAY EVENING EVENTS

18:00 – 19:30
Student Union, Terrace Bar

Graduate Students social

13.00 -21.00
Ecology
Shift
St. Georges Field

Earthrise Repair Shop – Meadow Meander
Baz Kershaw (UK)

Meet 21.30
Articulations
Shift
Millenium Square

Nightwalks with Teenagers Stephanie Springgay (Canada)/ Darren
O’Donnell (Canada)/ Saniya Ansari (Canada)

Roehampton has one of the strongest research profiles among modern universities
— *The Sunday Times University Guide*

Department of Drama, Theatre and Performance

Acknowledged as internationally excellent in the most recent UK Research Assessment Exercise, we undertake cutting-edge research that informs teaching on our undergraduate and postgraduate courses.

Courses

BA Drama, Theatre and Performance
MA / MRes Performance and Creative Research
MPhil / PhD

We have one of the most dynamic and interdisciplinary academic teams in Drama in the UK, with international reputations as performance makers, theoreticians, writers, visual artists and curators. The University of Roehampton also has a strong commitment to social equality, supporting one of the most diverse communities of students in the UK.

Find out more at:

[www.roehampton.ac.uk/
drama-theatre-and-performance](http://www.roehampton.ac.uk/drama-theatre-and-performance)

Department Staff

Joshua Abrams
Lis Austin
Simon Bayly
Ernst Fischer
Ewan Forster
Sarah Gorman
Susanne Greenhalgh
Adrian Heathfield
Chris Heighes
Joe Kelleher
Terry O'Connor
Emily Orley
Susan Painter
Jennifer Parker-Starbuck
PA Skantze
Ioana Szeman
Graham White
Lee White
Fiona Wilkie

**Honorary Visiting
Professor 2012–14**
Jonathan Burrows

Friday 29 June

Registration & Helpdesk Parkinson Court 08:00 - 17:00

9:30 -11:00

Plenary panel

Vision, viability & value: three perspectives on the performing arts across cultures, context and nations

Conference Auditorium

Anuradha Kapur, *Director National School of Drama, New Delhi, India*

Clarissa Ruiz, *Secretary of Culture, Recreation and Sports of the Mayoralty of Bogotá. Former Director of Arts, Ministry of Culture, Colombia, 2002-11*

Sheena Wrigley, *General Director & Joint Chief Executive, West Yorkshire Playhouse, Leeds, UK*

Chair: Bree Hadley, *Senior Lecturer in Performance Studies, Queensland University of Technology, Australia*

9:30 -11:00

Articulations

Shift

Clothworkers South G.14

The lost, the found, the fantasy: Urban Meditation (Workshop 1)

Jane Gabriels (Canada)

11.00 -21.00

Ecology

Shift

St. Georges Field

Earthrise Repair Shop – Meadow Meander

Baz Kershaw (UK)

11:00 – 11:30

Parkinson Court

BREAK - REFRESHMENTS

Friday 29 June

Registration & Helpdesk Parkinson Court 08:00 - 17:00

11:30 - 13:00

Articulations
Paper panel
Parkinson B.08

Articulations
Paper panel
Parkinson B.09

Articulations
Shift
Student Union Common Room

Articulations
Shift
Clothworkers South G.14

Articulations
Shift
Alec Clegg

Commercial
Paper panel
Music LT3

Ecology
Shift
St. Georges Field

Ecology
Shift
stage@leeds foyer

Ecology
Shift
Michael Sadler, Banham Theatre

Ecology
Paper panel
Parkinson B.11

Relations
Shift
Clothworkers South 2.03

Relations
Curated Panel
Baines Wing 3.06

PARALLEL SESSIONS 2.1

Culture/capitalism Kerry Whigham (USA)/ Jimena Ortuzar (Canada)/ Brian Batchelor (Canada)/ Chair: Elyssa Livergant

Fashion and performance Franziska Bork Petersen (Sweden)/ Michelle Liu Carriger (USA)/ Brandin Baron-Nusbaum (USA)/ Chair: Joslin McKinney

Tents will be Shifted: on being from Leeds Georgina Guy (UK)/ Joe Kelleher (UK)

The lost, the found, the fantasy: Urban Meditation (Workshop 1) (9.30-13.00)
Jane Gabriels (Canada)

'Torture as Performance': entertainment, pornography, or...?
Sara Brady (USA)/ Nicholas Johnson (Ireland)/ Gabriella Calchi-Novati (Ireland)

Authenticity and amateur performance Takeo Rivera (USA)/ Steve Greer (UK)/ Ashley Wallington (UK)/ Chair: Patrick Duggan

Earthrise Repair Shop – Meadow Meander (11.00 -21.00)
Baz Kershaw (UK)

Ecologies of siting: a durational attractor for (re)distributed attention Alanna Thain (Canada)/ Christoph Brunner (Canada)/ Bianca Scliar (Canada)

Fireflies in Molasses Jasmine Mahmoud (USA)

Performing fluidity in watery places Alys Longley and Rebecca Wood (New Zealand)/ Jiayun Zhuang (USA)/ Rachel Sweeney (UK)/ Chair: Clare Finburgh

Ignorance and negotiation (in the rehearsal process) Efrosini Protopapa (UK)/ Kathrin Felzmann (Germany)/ Susanna Recchia (UK)/ Joe Wild (UK)/ Andrew Graham (UK)

Performance in Historical Paradigms Working Group, panel 1
Tracy Cecile Davis (USA)/ Gwyneth Shanks (USA)/ Michelle Liu Carriger (USA)

Friday 29 June

Registration & Helpdesk Parkinson Court 08:00 - 17:00

Relations
Paper panel
Music LT1

Space, technology and performance Beth Weinstein (USA)/ Simon Hagemann (France)/ James Harding (UK)/ Chair: Claire Hicks

Relations
Shift
Parkinson Court

What is it Worth? (Market-based memory) (11.30-18.00)
Jeff McMahon (USA)

Training
Shift
Parkinson, Centenary Gallery

Journeys and their ends: training, social division, and quality (11.30-14.00) Simon Shepherd (UK)/ Catherine McNamara (UK)/ Helen Heaslip (UK)/ Richard Harrison (UK)/ Liselle Terrett (UK) / Sarah Edwards (UK)

Training
Roundtable
Michael Sadler LG.19

Performance and the digitalization of research Jon McKenzie (USA)/ Heike Roms (UK)/ Talia Rodgers (UK)/Toni Sant (UK)

Training
Paper panel
Music LT2

Tradition and innovation/ancient and modern training
Paul Allain (UK)/Katherine Mezur (USA)/ Chair: Peta Tait

Training
Shift
Clothworkers South G.11

Training : Ideology : History (closed session)

Training
Curated panel
Michael Sadler LG.17

What price participation?: agency, ethics, aesthetics and impact in participatory performance Rosemary Klich (UK)/ Nicola Shaughnessy (UK)/Melissa Trimmingham (UK)/ Pablo Arenillas-Pakula (UK)

Value
Paper panel
Parkinson 1.08

Articulating value Morigan Mullen (New Zealand)/ Celeste Fraser Delgado (USA)/Katerina Paramana (UK)/ Chair: Wolf-Dieter Ernst

Value
Installation/ Workshop
Parkinson Court

Communist Gallery TV – Cultural Olymp/ads (11.30-18.00)
Charlie Fox (UK)

Value
Curated panel
Michael Sadler LG.15

Refuse performance, part 1: value and efficacy Owen Parry (UK)/ Mathias Danbolt (Norway)/ João Florêncio (UK)

Value
Curated panel
Michael Sadler, Rupert Beckett LT

The actuality of Adorno: theatre, performance, and the Culture Industry reconsidered (again) panel 1 (11.30-13.30)
Liz Tomlin (UK)/ Freddie Rokem (Israel)/ Marc Nicolas Sommer (Switzerland)/ Karoline Gritzner (UK)/ Chair: Will Daddario

Friday 29 June

13:00 – 14:30

Registration & Helpdesk Parkinson Court 09:00 - 17:00

LUNCH BREAK

13:00 - 15.00

Training

Shift

Leeds Industrial Museum

Thread-by-Thread: A participatory, deconstructing militarism (un) sewing circle

Helene Vosters (Canada)

11.00 -21.00

Ecology

Shift

St. Georges Field

Earthrise Repair Shop – Meadow Meander

Baz Kershaw (UK)

13.30-16.30

Commercial

Shift

Benetton shop, The Light,
The Headrow, Leeds, LS1
8TL

Ugly Scenes Barnaby King (USA)/Richard Talbot (UK)

13.15-14.15

Professional development
session

Michael Sadler, LG15

'Balancing acts' Lara Shalson (UK) on behalf of PSi Emerging Scholars
Committee and the PSi Graduate Students Committee

13:15 - 14:15

Parkinson Court

Matthew Reason 'Meet the Editor Session' - Intellect Bookstand

LUDUS FESTIVAL LEEDS: SELECTED HIGHLIGHTS FOR FRIDAY

13.15 – 13.55

Riley Smith Hall,
Leeds University Union

Still Lives Different Light

14.00 – 15.30

Victoria Gardens,
Leeds City Centre

Lo Monstre Efimer

19.45 – 21.00

West Yorkshire Playhouse

Audience Ontroerend Goed

See <http://www.ludusfestival.org/> for details of the full Ludus programme and for booking



Department of **Theatre, Film and Television Studies** at Aberystwyth

We offer the following courses:

Undergraduate Degree Schemes:

- Performance Studies
- Drama and Theatre Studies
- Scenography and Theatre Design
- Film and Television Studies
- Media and Communication Studies

Many joint combinations are also available.

Postgraduate Degree Schemes:

- MA Practising Theatre and Performance
- MA Scriptwriting
- MA Film Studies
- MA Documentary Practice
- MA Media History
- MA Politics, Media and Performance
- MA Cyfryngau Creadigol Ymarferol

The Department also offers extensive opportunities for study towards PhD; contact us for more information.

The Department offers an unrivalled choice of modules, creative facilities and staff expertise.

For further information contact:

Nick Strong, Admissions Tutor
Department of Theatre, Film & Television Studies,
Telephone: +44(0)1970 622828
Fax: +44(0)1970 622831
E-mail: nbs@aber.ac.uk

www.aber.ac.uk/tfts



Friday 29 June

Registration & Helpdesk Parkinson Court 08:00 - 17:00

14:30 - 16:00

Articulations

Paper panel

Michael Sadler LG.17

PARALLEL SESSIONS 2.2

Articulations of otherness Katia Arfara (Greece)/ Bryanne Young (USA)/ Katherine Brewer Ball (USA)/ Chair: Kimberley McLeod

Articulations

Shift

Clothworkers Centenary Concert Hall

New voices, sustainable futures: music and theatre in the 21st Century (14.30-18.00) Pamela Karantonis (UK)/ Nick Till (UK)/ Christine Chibnall (UK)/ George Rodosthenous (UK)/ Craig Vear (UK)/ Áine Sheil (UK)

Articulations

Paper panel

Parkinson B.11

Participation, activism, resistance Kevin Brown (USA)/ Lynne McCarthy (UK)/ Margie-Margarida Rauen (Brazil)/Chair: Katie Beswick

Articulations

Curated Panel

Michael Sadler LG.19

Studies in music theatre in Japan: past and present of appropriation, consumption, education and research (14.30-18.00) Mori Yoshiko (Japan)/ Itoh Yuki (Japan)/ Yamanashi Makiko (Japan)/ Shirai Fumito (Japan)

Articulations

Paper panel

Music LT1

Technology/intermediality Yatin Lin (Taiwan)/ Luis Campos (UK)/ Chair: Sita Popat

Articulations

Shift

Clothworkers South G.14

The lost, the found, the fantasy: Urban Meditation (Workshop 2 14.30-18.00) Jane Gabriels (USA)

Commercial

Paper panel

Music LT3

Amateur performance: between cultural performance and the everyday Helen Nicholson (UK)/ Sarah Wishart (UK)/ Ivan Ramos (USA)/ Eleanor Skimin (USA)/ Chair: Phil Kiszley

Commercial

Roundtable

Baines 2.37

Reading as a woman Sarah Gorman (UK)/ Jen Harvie (UK)/ Gerry Harris (UK)/ Sophie Nield (UK)/ Lis Austin (UK)/ Sara Jane Bailes (UK)/Keren Zaiontz (UK)

Ecology

Curated panel

Parkinson B.08

Digital circulations: mediated performance and social media as emerging ecologies Sarah Bay-Cheng (USA)/ Jennifer Parker-Starbuck (UK)/ Andy Lavender (UK)

Ecology

Paper panel

Parkinson 1.08

Dwelling in and walking through Fiona Bannon (UK)/ Annette Arlander (Finland)/ Scott Palmer (UK)/ Louise Ann Wilson (UK)/ Chair: David Shearing

Ecology

Shift

St. Georges Field

Earthrise Repair Shop – Meadow Meander (11.00 -21.00) Baz Kershaw (UK)

Ecology

Shift

stage@leeds, Dance Studio

The animation project: self-perpetuating motors and sustainable performative economies Megan Nicely (USA)/ Kate Elswit (USA)

Friday 29 June

Relations

Shift

Michael Sadler LG.10

Relations

Curated panel

Baines Wing 3.06

Relations

Shift

Parkinson Court

Training

Paper panel

Parkinson B.09

Training

Paper panel

Parkinson B.10

Training

Shift

Parkinson, Room 18

Value

Curated panel

Music LT4

Value

Shift

Clothworkers South 2.03

Value

Paper panel

Parkinson Centenary Gallery

Value

Installation/workshop

Parkinson Court

Value

Shift

Student Union, Hidden Café

Value

Curated panel

Michael Sadler, Rupert Beckett

LT

Value

Paper panel

Music LT2

16:00-16:30

Registration & Helpdesk Parkinson Court 08:00 - 17:00

Performance academics performing academically. Or, academic speed dating Patrick Duggan (UK)

Performance in Historical Paradigms Working Group, panel 2

Aniko Szucs (USA)/Ana Bigotte Vieira (Portugal)/ Ioana Szeman (UK)

What is it Worth? (Market-based memory) (11.30-18.00)

Jeff McMahon (USA)

Gesture, habit and expressivity Frank Camilleri (UK)/ Giulia Vittori (USA)/

Andrea Moon (USA)/Chair: Paul Allain

Labouring bodies Katrin Dettmer (USA)/ Donatella Barbieri (UK)/ Greer

Crawley (UK)/ Kathinka Walter (UK)/ Chair: Ben Spatz

Pause; audience engagement and the blurring of boundaries in participatory performance: a practical investigation through performances

Pablo Pakula (UK)/ Accidental Collective (UK)

Census, economy and naturalism Eve Katsouraki (UK)/ Tony Fisher (UK)/

Broderick Chow (UK)

Changing money geheimagentur (Secret Agency)

Commerce and integrity Alice O'Grady (UK)/ James Hamilton (USA)/

Rolf Hoefer (France)/ Chair: Peter Eckersall

Communist Gallery TV – Cultural Olymp/ads (11.30-18.00)

Charlie Fox (UK)

Domestic Train Wreck Melanie Bennett (Canada)/ Aaron Collier (Canada)/

Richie Wilcox (Canada)

The actuality of Adorno: theatre, performance and the Culture Industry reconsidered (again) panel 2 Chris Gontar (USA)/ Rebecca Dolgoy (UK)/

Rebecca Daker (UK)/ Chair: Will Daddario

What matters? Kirsten Broekman (UK)/ Charlie Fox (UK)/ Andrew Westerside (UK)/Chair: Gareth Somers

BREAK - REFRESHMENTS

Friday 29 June

Registration & Helpdesk Parkinson Court 08:00 - 17:00

16:30 - 18:00

PARALLEL SESSIONS 2.3

Articulations
Paper panel
Parkinson 1.08

Audience and participation Jia-luan Chin (Taiwan)/ Wolf-Dieter Ernst (Germany)/ Jenny Lawson (UK)/ Chair: Sita Papat

Articulations
Curated panel
Music LT3

Carpe Minuta Prima- reflection on Thursday performances Michelle Castaneda (UK)/ Andrew Bill Roberts (UK)/ Saini Mainnen (UK)/ Chair: Brian Lobel (UK)

Articulations
Paper panel
Parkinson B.09

Global hybridity Ivy I-Chu Chang (Taiwan)/ Ilana Salama Ortar (Israel)/ Matthias Regan (USA)/ Chair: Mark Harvey

Articulations
Shift
Clothworkers Centenary
Concert Hall

New voices, sustainable futures: music and theatre in the 21st Century (14.30-18.00) Pamela Karantonis (UK)/ Nicholas Till (UK)/ Christine Chibnall (UK)/ Craig Vear (UK)/ Áine Sheil (UK) and George Rodosthenous (UK)

Articulations
Paper panel
Parkinson B.11

Performance and production of space Jacqueline Taucar (Canada)/ Julia Listengarten (USA)/ Meredith Rogers (Australia)/ Chair: Kerry Whigham

Articulations
Curated panel
Michael Sadler LG.19

Studies in music theatre in Japan: past and present of appropriation, consumption, education and research (14.30-18.00) Mori Yoshiko (Japan)/ Itoh Yuki (Japan)/ Yamanashi Makiko (Japan)/ Shirai Fumito (Japan)

Articulations
Shift
Clothworkers South G.14

The lost, the found, the fantasy: Urban Meditation (Workshop 2) (14.30-18.00) Jane Gabriels (USA)

Commercial
Curated panel
Michael Sadler, Rupert Beckett LT

A matter of life and death: the lure of football, theatre and city or why the Globe should be more like Anfield John Bennett (UK)/ Andrew Sherlock (UK)/ Ros Merkin (UK)

Commercial
Curated panel
Baines Wing Miall LT 2.34

Consuming childhood: past, present and future Helen Freshwater (UK)/ Gilli Bush-Bailey (UK)/ Joshua Abrams (UK)/ Lourdes Orozco (UK)

Ecology
Shift
St. Georges Field

Earthrise Repair Shop – Meadow Meander (11.00 -21.00)
Baz Kershaw (UK)

Relations
Paper panel
Parkinson B.08

Fiction, realities and the ideology of terror Dave Calvert (UK)/ Natalie Mathieson (Canada)/ Abigail De Kosnik (USA)/ Chair: Kara McKechnie

Relations
Shift
Parkinson Court

What is it Worth? (Market-based memory) (11.30-18.00)
Jeff McMahon (USA)

Friday 29 June

Registration & Helpdesk Parkinson Court 08:00 - 17:00

Training

Performed conversation
**stage@leeds, Alec Clegg
studio**

**'Dear Potential Participant': thoughts on performance, pedagogy
and participation** Sara Jane Bailes (UK)/ Karen Christopher (UK)

Training

Shift
Parkinson, Room 18

**Pause; audience engagement and the blurring of boundaries
in participatory performance: a practical investigation through
performances** Pablo Pakula (UK)/ Accidental Collective (UK)

Training

Paper panel
Parkinson B.10

Pedagogy, efficacy and resistance Kay Hepplewhite (UK)/ Joshua
Williams (USA)/ Ian Watson (USA)/Chair: Alice O'Grady

Training

Paper panel
**Parkinson, Centenary
Gallery**

Performance, corporations and capitalism Bree Hadley (Australia)/
Daniel Johnston (Australia)/ Chair: Mechtild Widrich

Training

Paper panel
Music LT1

Sports, olympians and record breaking Emily Hella Tsaconas (USA)/
Bettina Brandl-Risi (Germany)/ Yasmine Jahanmir (USA)/Chair: Lisa
Moren

Value

Installation/workshop
Parkinson Court

Communist Gallery TV – Cultural Olymp/ads (11.30-18.00)
Charlie Fox (UK)

Value

Shift
**Michael Sadler, Banham
Theatre**

This Town Yelena Gluzman (Japan)

Value

Paper panel
Music LT3

Undoings Marina Agathangelidou (Germany)/ Mara Polgovsky Ezcurra
(Mexico)/ Marco Pustianaz (Italy)/Chair: Kimberly, Jannarone

Meeting

Michael Sadler LG.17

Dramaturgy and Performance Working Group meeting

Peter Eckersall (Australia)/ Marin Blažević (Croatia)

Clothworkers South G.11

Porous Studio: a project of the Artists' Committee (16.30-19.30)

Convenors: Ray Langenbach (Malaysia) / Nicholas Johnson (Ireland)

FRIDAY EVENING EVENTS

Meet 21.30

Articulations

Shift

Millenium Square

Nightwalks with Teenagers Stephanie Springgay (Canada)/ Darren O'Donnell
(Canada)/ Saniya Ansari (Canada)

Meet 23.15

Ecology

Shift

stage@leeds foyer

Red Route Stephen Bottoms (UK)

CENTRAL
SCHOOL
OF SPEECH & DRAMA

UNIVERSITY OF LONDON

SPONSORS OF PSI 2012

PRACTICE-BASED RESEARCH IN LONDON

As a specialist centre of excellence, Central School of Speech & Drama is pre-eminent in the UK with industry-specific facilities which support research through practice.

With extensive connections, expanding international links, and as a college of the University of London, Central continues to build bridges between leading-edge practice and advanced academic enquiry. Postgraduate and Doctoral study here gives the opportunity to engage with an area of drama, theatre, scenography or performance in depth and at the highest level of scholarship.

Areas of specialisation include:

- > acting, movement and voice
- > applied theatre
- > concepts and contexts
- > contemporary dramaturgies
- > puppetry and object theatre
- > music theatre and sound.

Funding is available to excellent applicants.

WWW.CSSD.AC.UK/STUDY/POSTGRADUATE | ENQUIRIES@CSSD.AC.UK



LEEDS METROPOLITAN UNIVERSITY

PERFORMING ARTS COURSES

We're looking for the next generation of exciting and leading Performers.

We offer a wide range of exciting courses across the Performing Arts, each of which is supported by state-of-the-art performance equipment and environments in the city of Leeds.

Our courses include:

- MA Filmmaking
- MA Performance
- MA Music Production
- MSc Audio Engineering
- BA (Hons) Film & Moving Image Production
- BA (Hons) Performance
- BA (Hons) Dance
- BA (Hons) Music Production
- BA (Hons) Music Production & Performance
- BSc (Hons) Music Technology

For more information:

Tel: 0113 812 3113

Email: course-enquiries@leedsmet.ac.uk



**LEEDS
METROPOLITAN
UNIVERSITY**

www.leedsmet.ac.uk/study

Saturday 30 June

Registration & Helpdesk Parkinson Court 08:00 - 17:00

09:30 - 11:00

Articulations
Paper panel
Michael Sadler LG.19

PARALLEL SESSIONS 3.1

Audience, agency and experience Adam Alston (UK)/ Leila Jancovich (UK)/ Matthew Reason (UK)/ Chair: Joslin McKinney

Articulations
Paper panel
Parkinson B.09

Identity/interculturalism Marios Chatziprokopiou (Greece)/ Hyun Joo Lee (USA)/ Sarah Youssef (Germany)/Chair: Aneta Mancewicz

Articulations
Shift
Parkinson, Room 18

Inspiration Exchange (09.30-18.00) Alexander Kelly (UK)

Articulations
Paper panel
Parkinson B.10

Language, hybridity, diversity Karina Lemmer (South Africa)/ Millie Taylor (UK)/ Heli Aaltonen (Norway)/ Chair: Peter O'Rourke

Articulations
Roundtable
Michael Sadler LG.15

Occupy everywhere: a roundtable discussion Lara Shalson (UK)/ Laura Levin (Canada)

Ecology
Shift
St. Georges Field

Eartrise Repair Shop – Meadow Meander (11.00 -14.30)
Baz Kershaw (UK)

Ecology
Paper panel
Parkinson B.08

Place, process, protest Jodie Allison (UK)/ Jennifer Spiegel (Canada)/ Chair: Kevin Brown

Ecology
Curated panel
Baines Wing 3.06

Practising location: ecologies and economies of spectatorship (9.30 - 11.30) Andrew Filmer (UK)/ Adrian Kear (UK)/ Carl Lavery (UK)

Relations
Paper panel
Music LT3

Contemporary and popular culture T.Nikki Cesare (Canada)/ Ira S. Murfin (USA)/ Wojciech Kowalczyk (Poland)/ Chair: Jan Suk

Relations
Shift
University Square Precinct

PSi Liberation Front (9.30-18.00) The Committee (UK)

Relations
Shift
Parkinson Court

What is it Worth? (Market-based memory) (09.30-18.00)
Jeff McMahon (USA)

Training
Shift
Clothworkers South 2.03

2020: a performance time-machine (9.30-13.00) Daniel Ladnar (UK)/ Gareth Llyr (UK)/ Esther Pilkington (Germany)

Saturday 30 June

Registration & Helpdesk Parkinson Court 08:00 - 17:00

Training
Curated panel
Baines Wing 2.37

Hanging out with clowns: transforming paradigms of contemporary clowning and circus arts in the Americas

Barnaby King (USA)/ James Hesla (USA)/ Roy Gomez-Cruz (USA)/
Chair: John Emigh

Training
Shift
stage@leeds, Dance Studio

Performing cultures of rebellion and their 'economies' of spectacle: a Butoh porous practice/discussion/performance shift Katherine

Mezur (USA)/ Megan Nicely (USA)

Training
Paper panel
Music LT2

Training institutions, work and labour Sadie Hunt (UK)/ Daniel Johnston (Australia)/Christopher Hay (Australia)/Egil Kipste (Australia)/
Chair: Bettina Brandl-Risi

Value
Paper panel
Parkinson 1.08

Bodies and belonging Kirsty Sedgman (UK)/ Carol Marie Webster (Jamaica)/
Chair: Sally Mackey

Value
Paper panel
Parkinson B.11

Embodiments Mark Pizzato (USA)/ Erin Hood (USA)/Chair: Tony Gardner

Value
Paper panel
Music LT1

Neo-liberal contexts Jen Harvie (UK)/ Tom Richards (UK)/ Karen Savage (UK)/
Chair: Mark Harvey

11:00 – 11:30
Parkinson Court

BREAK - REFRESHMENTS

Saturday 30 June

Registration & Helpdesk Parkinson Court 08:00 - 17:00

11:30 - 13:00

Articulations
Shift

Parkinson, Room 18

PARALLEL SESSIONS 3.2

Inspiration Exchange (09.30-18.00) Alexander Kelly (UK)

Articulations

Paper panel

Music LT3

Intermedial/intercultural Ewa Jelen (Poland)/ Donia Mounsef (Canada)/ Kimberley McLeod (Canada)/ (USA)/ Chair: Meredith Rogers

Articulations

Paper panel

Parkinson B.08

Mediating identity: practitioner processes Victor Manuel Ramirez Ladron de Guevara (UK)/ Oliver Bray (UK)/ Mark Flisher (UK)/ Colleen Daniher (USA)/ Chair: Lonneke Van Heugten

Articulations

Paper panel

Parkinson B.10

Protest and resistance Ray Langenbach (Malaysia)/ Melissa Wansin Wong (USA)/ Heather Rastovac (USA)/ Chair: Amanda Stuart-Fisher

Articulations

Paper panel

Music LT2

Tradition, modernity and globalisation Marcus Tan (Singapore)/ Yin-Ying Huang (Taiwan)/ Sukanya Chakrabarti (USA)/ Chair: Margie-Margarida Rauhen

Ecology

Shift

St. Georges Field

Earthrise Repair Shop – Meadow Meander (11.00 -14.30)

Baz Kershaw (UK)

Ecology

Shift

stage@leeds foyer

Ecologies of siting: a durational attractor for (re)distributed attention Alanna Thain (Canada)/ Christoph Brunner (Canada)/ Bianca Scliar (Canada)

Ecology

Paper panel

Music LT1

Revitalising urban place and community Katie Beswick (UK)/ Charlotte Gray (UK)/ Donna Riley (UK)/ Joel Anderson (UK)/ Chair: Alice O'Grady

Relations

Curated panel

Baines Wing, Miall LT 2.34

Critical history: contemporary practice Emer O'Toole (UK)/ Karen Quigley (UK)/ Mara Lockowandt (UK)

Relations

Shift

Clothworkers South G.14

If anyone wonders why rocks break down (installation) (11.30-18.00) David Shearing (UK)

Relations

Shift

University Square Precinct

PSi Liberation Front (9.30-18.00) The Committee (UK)

Relations

Curated panel

Baines Wing 3.06

Punk: from Los Angeles to Leeds Jennifer Doyle (USA)/ Gavin Butt (UK)/ José Muñoz (USA)

Relations

Shift

Parkinson Court

What is it Worth? (Market-based memory) (09.30-18.00) Jeff McMahon (USA)

Saturday 30 June

Registration & Helpdesk Parkinson Court 08:00 - 17:00

Training
Shift

Clothworkers South 2.03

2020: A Performance Time-Machine (9.30-13.00) Daniel Ladnar (UK)/
Gareth Llyr (UK)/ Esther Pilkington (Germany)

Training
Paper panel

Michael Sadler LG.17

International perspectives on training Christopher Hay (Australia)/
Juliusz Tyszka (Poland)/ Charlott Neuhauser (Sweden)/ Chair: Gabriel
Levine

Training
Shift

**stage@leeds, Alec Clegg
studio**

Permission to work differently: designer as auteur Becs Andrews
(UK)

Training
Shift

**Michael Sadler, Banham
Theatre**

**Rite of the Butcher: evaluating performance as research (11.30-
16.00)** Ben Spatz (USA)

Training
Curated panel

Michael Sadler LG.15

**Trained, educated or 'constructed' for industry?: negotiating the
balance between educational 'duty of care' and 'industry-ready'
professionalism** Mark Seton (Australia)/ Ross Prior (UK)/ David
Petherbridge (UK)

Training
Shift

Michael Sadler LG.10

Training: Ideology: History (open session) (11:30 - 13:30) Jonathan
Pitches (UK)/ Maria Kapsali (UK)/Ruru Li (UK)/David Jiang (UK)/Anna
Fenemore (UK)/ Mark Evans (UK)/Simon Murray (UK)

Training
Shift

Clothworkers South G.11

The utopian tool kit (11.30-18.00) Saara Hannula (Finland)/Pekko
Koskinen (Finland)

Value
Curated panel

**Michael Sadler, Rupert
Beckett LT**

Are you expedient? market, place, performance Kimberly Jannarone
(USA)/ Paul Rae (Singapore)/ Elizabeth Tomlin (UK)

Value
Paper panel

Music LT4

Aurality, virtuality and place Lynne Kendrick (UK)/ Fabrizio Manco
(UK)/ Thea Brejek Switzerland)/ Chair: Annette Arlander

Value
Paper panel
Parkinson 1.08

Bodies at work Jungmin Song (UK)/ Melanie Bennett (Canada)/ Yelena
Gluzman (Japan)/ Chair: Nicholas Johnson

Value
Curated panel
Baines Wing 2.37

**Intrinsic instrumentality: problematizing the autonomous function
of theatre** Joshua Edelman (UK)/ Louise Ejgod (Denmark)/ Quirijn
Lennert Van Den Hoogen (Netherlands)

Meeting
Michael Sadler LG.19

PSi International Committee meeting (11:30 - 13:30)
Chair: Marin Blažević (Croatia)

Saturday 30 June

Registration & Helpdesk Parkinson Court 09:00 - 17:00

13:00 – 14:30

LUNCH BREAK

13:00 - 15:00

Training

Shift

Leeds Industrial Museum

Thread-by-Thread: A participatory, deconstructing militarism (un) sewing circle

Helene Vosters (Canada)

11.00 -14.30

Ecology

Shift

St. Georges Field

Earthrise Repair Shop – Meadow Meander

Baz Kershaw (UK)

13.30-16.30

Commercial

Shift

**Benetton shop, The Light,
The Headrow, Leeds, LS1
8TL**

Ugly Scenes Barnaby King (USA)/Richard Talbot (UK)

Meeting

13.15-14.15

Baines, Miall LT 2.34

PSi Emerging Scholars Committee

Meeting

13.15-14.15

**Michael Sadler, Rupert
Beckett LT**

PSi Graduate Students Committee

13.15 -14.15

**Parkinson, Centenary
Gallery**

Palgrave Macmillan - Publisher's Book Launch

LUDUS FESTIVAL LEEDS: SELECTED HIGHLIGHTS FOR SATURDAY

13.15 – 13.55

**The Edge, University of
Leeds**

Synchronised Balbir Singh Dance Company

13.15 – 13.55

**Riley Smith Hall,
Leeds University Student
Union**

Still Lives Different Light

14.30 – 16.00

**Clothworkers Centenary
Concert Hall, University of
Leeds**

St George Opera North Resonance

See <http://www.ludusfestival.org/> for details of the full Ludus programme and for booking

ARTS THEATRE SURREY

DANCE / FILM / LITERATURE / MUSIC / THEATRE / VISUAL ARTS



Visit www.surrey.ac.uk/gbf
for details on our events and to book online



Saturday 30 June

Registration & Helpdesk Parkinson Court 08:00 - 17:00

14:30 - 16:00

PARALLEL SESSIONS 3.3

Articulations

Shift

Michael Sadler LG.10

Economies of disease, a study in performance and witness

Marie Garlock (USA)

Articulations

Shift

Parkinson, Room 18

Inspiration Exchange (09.30-18.00) Alexander Kelly (UK)

Articulations

Paper panel

Parkinson B.11

Re-mixing and shifting boundaries Institute For Live Arts Research/
Mia Perry (Canada)/ Steph Berntson (Canada)/ Chair: Katherine Mezur

Commercial

Paper panel

Music LT1

Skills, value and labour Caleb Lee (Singapore)/ Kai Van Eikels
(Germany)/ William Huizhu Sun (China)/Chair: Maryrose Casey

Commercial

Roundtable

Parkinson 1.08

The Sunday artist explored Claire Hicks (UK)/ Nicola Carter (UK)/
Miguel Pereira (Portugal)

Ecology

Shift

Workshop Theatre

Alive on the knife edge of now Adam Strickson (UK)

Ecology

Discussion

Michael Sadler LG.19

Earthrise Repair Shop: Meadow Meander Silencing Seminar
Baz Kershaw (UK)

Ecology

Curated panel

Baines Wing 3.06

Rendering the animal: technologies of animal representation
Jennifer Parker-Starbuck (UK)/ Austin McQuinn (Ireland)/ Deke Weaver
(USA)

Relations

Shift

Clothworkers South G.14

**If anyone wonders why rocks break down (installation) (11.30-
18.00)** David Shearing (UK)

Relations

Roundtable

Michael Sadler LG.15

New adventures in publishing Convenor: CJ Mitchell (UK)

Relations

Shift

Clothworkers South 2.03

Performance in Historical Paradigms Working Group shift
Lisa Peschel (UK)

Relations

Shift

University Square Precinct

PSi Liberation Front (9.30-18.00) The Committee (UK)

Saturday 30 June

Registration & Helpdesk Parkinson Court 08:00 - 17:00

Relations
Shift
Parkinson Court

What is it Worth? (Market-based memory) (09.30-18.00) Jeff McMahon (USA)

Training
Curated Panel
Music LT2

Doing Knowledge: practice as a challenge to academic research, part 1 Gunhild Borggreen (Denmark)/Peter van den Meijden (Denmark)/Malene Vest Hansen (Denmark)

Training
Paper Panel
Parkinson B.08

Empathy, selfhood and performance
Lynn Lu (UK)/ Linda Taylor (UK)/ Pablo Costa (Brazil)/ Chair: Kathinka Walter

Training
Curated panel
Baines Wing 2.37

Labour of love: care and practice in participatory performance practices
Amanda Stuart Fisher (UK)/ Kat Low (UK)/ Helen Nicholson (UK)/ Sheila Preston (UK)

Training
Shift
Michael Sadler, Banham Theatre

Rite of the Butcher: evaluating performance as research (11.30-16.00) Ben Spatz (USA)

Training
Paper panel
Music LT3

Training, performance, gender and identity
Rustem Ertug Altinay (Turkey)/ Tony Perucci (US)/ Anan Nobuko (UK)/ Chair: Nick Hunt

Training
Shift
Clothworkers South G.11

The utopian tool kit (11.30-18.00) Saara Hannula (Finland)/Pekko Koskinen (Finland)

Value
Paper panel
Parkinson B.09

Immersion Tero Nauha (Finland)/ Debra Watson (UK)/ Bruce Barton (Canada)/ Chair: Lynn Kendrick

Value
Paper panel
Parkinson B.10

Liveness and authenticity James Woolley (UK)/ Pedro Manuel (Netherlands)/Lisa Newman (UK)/ Chair: Johanna Householder

Value
Paper panel
Music LT4

Resistance, disturbance and negotiation Meiling Cheng (USA)/ Anna Teresa Scheer (Australia)/ Chair: Kara McKechnie

Value
Shift
TV Studio

Salon de Refuse Augusto Corrie (UK)/ Owen Parry (UK)/ Sandra Umatham (Germany)/ Rebecca Louise Collins (UK)/ Nikolas Wakefield (USA)

Meeting
Michael Sadler LG.17

Intermediality Working Group meeting (14.30-18.00) Convenors: Sigrid Merx (Netherlands)/ Andy Lavender (UK)

16:00 - 16:30

BREAK REFRESHMENTS

Saturday 30 June

Registration & Helpdesk Parkinson Court 08:00 - 17:00

16:30 - 18:00

Articulations
Curated panel
Michael Sadler, Rupert Beckett LT

Articulations
Shift
Parkinson, Room 18

Articulations
Shift
Michael Sadler LG.10

Commercial
Paper panel
Parkinson B.10

Ecology
Shift
St. Georges Field

Ecology
Paper panel
Parkinson B.08

Ecology
Shift
stage@leeds, Alec Clegg

Relations
Shift
Clothworkers South G.14

Relations
Shift
University Square Precinct

Relations
Paper panel
Music LT4

Relations
Curated panel
Baines Wing 3.06

Relations
Shift
Parkinson Court

PARALLEL SESSIONS 3.4

Back to Back Theatre's *Ganesh versus the Third Reich*: politics, representation and response Helena Grehan (Australia)/ Peter Eckersall (Australia)/ Bruce Gladwin (Australia)/ Alice Nash (Australia)

Inspiration Exchange (09.30-18.00) Alexander Kelly (UK)

The performative classroom Monica Stufft (USA)

Mass appeal: art and the market Eero Laine (USA)/ Garry Lyons (UK)/ Nicholas Till (UK)/ Chair: George Rodosthenous

Earthrise Repair Shop – Meadow Meander (16.30 -21.00)
Baz Kershaw (UK)

Environmental aesthetics Ioana Jucan (USA)/ Joanne Zerdy (USA)/ Clare Finburgh (UK)/ Chair: Fiona Bannon

The Tower Block –post mortem: the dramaturgy of vulnerability-rethinking the personal and the political Barbro Rønnin (Norway)/ Kari Veiteberg (Norway)/ Andreas Schille (Norway)

If anyone wonders why rocks break down (installation) (11.30-18.00) David Shearing (UK)

PSi Liberation Front (9.30-18.00) The Committee (UK)

Reality and technology in performance Piotr Woycicki (UK)/ Hein Goeyens (Netherlands)/ Chair: Aneta Mancewicz

What is here? performativity and artistic research Karmenlara Ely (Norway)/ Serge Von Arx (Norway)/ Awam Amkpa (USA)

What is it Worth? (Market-based memory) (09.30-18.00) Jeff McMahon (USA)

Saturday 30 June

Registration & Helpdesk Parkinson Court 08:00 - 17:00

Training

Curated Panel

Music LT2

Doing Knowledge: practice as a challenge to academic research, part 2 Mette Obling Høeg (Denmark)/Laura Luise Schultz (Denmark)/Jens Hesselager (Denmark)

Training

Shift

Clothworkers South G.11

The utopian tool kit (11.30-18.00) Saara Hannula (Finland)/Pekko Koskinen (Finland)

Value

Paper panel

Michael Sadler LG.19

Avant-gardes Jasmine Mahmoud (USA)/ Claire Warden (UK)/ Chair: Patrick Duggan

Value

Curated panel

Baines Wing 2.37

Exploring interdisciplinary & collaborative practices in the context of contemporary economic and cultural drivers Toni Sant (UK)/ Christopher Newell (UK)/ Aristita Albacan (UK)/ Maria Chatzichristodoulou (UK)

Value

Paper panel

Parkinson B.09

Institutions Amy Partridge (USA)/ Raffaele Furno (Italy)/ Adair Rounthwaite (USA)/ Chair: Phil Kiszley

Meeting

Michael Sadler LG.17

Intermediality Working Group meeting (14.30-18.00) Convenors: Sigrid Merx (Netherlands)/ Andy Lavender (UK)

SATURDAY EVENING EVENTS

16.30 -21.00

Ecology

Shift

St. Georges Field

Earthrise Repair Shop – Meadow Meander

Baz Kershaw (UK)

23:00 – 0:00

Articulations

Shift

Student Union, Terrace Bar

Animal Cabaret

Kimberly Jannarone (US) and Sarah Bay-Cheng (US)

meet at 23:15

Ecology

Shift

stage@leeds foyer

Red Route Stephen Bottoms (UK)



*Distinguish
yourself*

MA Theatre & Performance Studies

The new MA in Theatre & Performance Studies in the English Department at King's College London is for anyone who is interested in engaging critically and creatively with theatre and performance theories and practices.

In addition to being part of the vibrant research culture at King's and being taught by active scholars in the field as well as visiting artists, our students benefit from King's unrivalled location in the heart of London.

Modules include:

- Theatre & Performance Theory
- Theatre & Performance Research Methods
- Performance & Live Art
- Performing Rights
- Performance Lab

Students may also complete a Guided Study option which offers internships with a number of leading arts organisations in London, including the Victoria & Albert Museum, the National Theatre Archives and Tate Modern. Modules can also be taken from a range of other MA programmes in the School of Arts & Humanities.

For more information and to apply, visit

www.kcl.ac.uk/prospectus

PERFORMANCE



F O

N D

T I

U

A

O

N



Sunday 1 July

Registration & Helpdesk Parkinson Court 08:00 - 17:00

9:30 – 11:00
Conference Auditorium

PSi ANNUAL GENERAL MEETING

Address by PSi President Maaïke Bleeker

Dwight Conquergood Award; Routledge Prize; Artist/Scholar/Activist Award

Reports from PSi's committees and working groups

Presentation on the PSi#19 conference at Stanford University, USA in 2013

All conference delegates are warmly invited to attend and contribute to the PSi Annual General Meeting

11:00 – 11:30

BREAK - REFRESHMENTS

11.00 -14.30
Ecology
Shift
St. Georges Field

Earthrise Repair Shop – Meadow Meander
Baz Kershaw (UK)

Sunday 1 July

Registration & Helpdesk Parkinson Court 08:00 - 17:00

11:30 - 13:00

PARALLEL SESSIONS 4.1

Articulations
Curated panel
Baines Wing Miall LT 2.34

Diasporic acts and the scene of consumption Joshua Takano
Chambers-Letson (USA)/ Andre Carrington (USA)/ Stephanie Hsu (USA)

Articulations
Shift
Michael Sadler LG.10

How fables replace history: Paul Bunyan meets the ‘vanishing Indian’Michelle Hernandez (USA)

Articulations
Paper panel
Parkinson B.09

Intercultural translation Jeremy Bidgood (UK)/ Kellen Hoxworth (USA)/
Ke Shi (UK)/ Chair: Roberta Mock

Articulations
Shift
Clothworkers South G.14

Tamara. Sasa. Tamara. II Sasa Rajšić (Finland)/ Tamara Platiša
(Canada)

Articulations
Roundtable
Clothworkers South G.11

**‘They do not exist’?:performing resistance in the occupied
Palestinian territories (11.30-13.30)** Maurya Wickstrom (USA)/
Rayya El Zein (USA)

Articulations
Paper panel
Music LT1

Translation and migration Hypatia Vourloumis (Greece)/ Marios
Chatziprokopiou (Brazil)/Ruth Hellier-Tinoco (USA)/Simon Parry (UK)/
Chair: George Rodosthenous

Commercial
Shift
**Michael Sadler, Banham
Theatre**

Ugly Scenes Barnaby King (USA)/ Richard Talbot (UK)

Ecology
Shift
St. Georges Field

Earthrise repair shop – Meadow Meander (11.00 -14.30)
Baz Kershaw (UK)

Ecology
Curated panel
Clothworkers South 2.03

Performative diagrammatic practices Christoph Brunner (Canada)/
Bianca Mancini (Canada)/ Alanna Thain (Canada)

Ecology
Paper panel
**Parkinson, Centenary
Gallery**

Sex meat and ecology Kelsey Speakman (Canada)/ Tanya Augsburg
(USA)/ Chair: Adrian Kear

Relations
Paper panel
Michael Sadler LG.19

Beauty, fashion and transformation Rebecca Halliday (Canada)/ Kate
Adams (UK)/ Stefan Hölscher (Germany)/ Chair: Julia Listengarten

Relations
Other
Parkinson B.08

Performance in Historical Paradigms Working Group: roundtable discussion Convenors: Lisa Peschel (UK)/ Aniko Szucs (USA)

Relations
Curated panel
Michael Sadler LG.17

The bottom line: social relations and market determinations
Jane Collins (UK)/ Anna Birch (UK)/ Kathleen Irwin (Canada)

Training
Shift
Parkinson 1.08

Pause; audience engagement and the blurring of boundaries in participatory performance: a practical investigation (Reflection on Friday's performances) Pablo Pakula (UK)

Value
Curated panel
Music LT3

Desire, reciprocity and repetition: three perspectives on the one-on-one encounter Rachel Zerihan (UK)/ Eirini Kartsaki (UK)/ Brian Lobel (UK)

Value
Paper panel
Parkinson B.10

Materialities Stephanie Tam (USA)/ Derek Miller (USA)/ Chair: Becs Andrews

Value
Curated panel
Baines Wing 2.37

On labour itself Nicola Conibere (UK)/ Nicholas Ridout (UK)/ Theron Schmidt (UK)

Value
Paper panel
Parkinson B.11

Precarity, marginalisation and alterity Tony McCaffrey (New Zealand)/ Ana Vujanovic (Serbia)/ Gigi Argyropoulou (UK)/ Chair: Jonathan Pitches

Value
Curated panel
Michael Sadler LG.15

Refuse performance 2 Vikki Chalklin (UK)/ Oriana Fox (UK)/ Jay Stewart (UK)

Discussion
Michael Sadler, Rupert Beckett LT

How PSi thinks Leeds / how Leeds thinks PSi Ray Langenbach (Malasia)/ Paul Rae (Singapore)

Sunday 1 July

Registration & Helpdesk Parkinson Court 08:00 - 17:00

13:00 - 14:30

LUNCH BREAK

13:15 - 14:15
Parkinson Court

Ross Prior Book Signing - Intellect book stand

13:00 - 15:00

Shift

Leeds Industrial Museum

Thread-by-Thread: A participatory, deconstructing militarism (un) sewing circle

Helene Vosters (Canada)

11.00 – 14.30

Ecology

Shift

St. Georges Field

Earthrise Repair Shop – Meadow Meander

Baz Kershaw (UK)

14:30 – 16:00

Conference Auditorium

HORIZONS PLENARY

Reflections on the conference and ways forward.

Delegates are invited to use the blog throughout the conference to record responses, discussions and ideas to help frame the agenda.

16: 00 – 16:30

Parkinson Court

Refreshments

CONFERENCE CLOSES

PSi#18 personnel

Conference directors: Mick Wallis and Joslin McKinney

Conference organisation and administration: Natasha Rahanu and Ros Bates

Administrative support: Linda Smith

Conference track chairs: Stephen Bottoms, Joslin McKinney, Jonathan Pitches, Sita Popat and Mick Wallis

Schedule and Chairs co-ordinator: Katie Beswick

Porous Shifts liaison: David Shearing

Technical director: Steve Ansell

Technical co-ordination: Chris Megginson

Research assistants: Rosie Hannis and Isla Watton

Volunteer co-ordination: Linda Horsburgh and Frances Craven

Information technology advisor: Tim Banks

Web design: Aaron Thomas and Rhys Williams

Blog moderator: Kara McKechnie

Acknowledgements

We gratefully acknowledge a contribution of £5000 from the University of Leeds' Academic Development Fund; and support in kind from the School of Music and Workshop Theatre.

Thanks to:

Steve Ainsworth

David Cooper

Lee Dalley

David Dixon and the Timetabling and Room Bookings Team

Jane Ford, Access and Community Engagement

Peros Ltd

Beverley Kenny and University Catering

Dan Merrick

Michele Troughton

Performance Studies international Board members

President: Maaïke Bleeker

Secretary: Laura Cull

treasurer: Branislav Jakovljevic

International Committee: Marin Blažević

Artists Committee: Ray Langenbach

Graduate Students Committee: Melissa Wong

Emerging Scholars Committee: Lara Shalson and Rivka Eisner

Independent Scholars Committee: Nicolas Salazar

Prizes and awards: Laura Luise Schultz

Archivist: Tracy C. Davis

Sarah Bay Cheng

Gunhild Borggreen

Bree Hadley

Dorita Hannah

James Harding

Johanna Householder

Laura Levin

Joslin McKinney

Lindsey Mantoan

Jisha Menon

Sigrid Merx

Sophie Nield

Efrosini Protopapa

Ana Vujanovic

Mick Wallis

New PSi website

PSi is very proud to present its brand new website. Please go to psi-web.org/ to check it out and to register for the free News Service.

PSi awards

Artist/Scholar/Activist (ASA) award

PSi has created a new award for outstanding achievement within the cross-disciplinary field of performance, the ASA Award. It is to be given to an Artist/Scholar/Activist who has spent at least a decade

fostering exchange between Artists/Scholars/Activists; and fostering either interdisciplinary or international

collaboration. The Award consists of US\$1000 and conference registration plus travel expenses.

The ASA award for 2012 goes to Bobby Baker. Bobby will be performing her show Mad Gyms and Kitchens as part of Ludus Festival Leeds and participating in the Openings plenary session for the PSi#18

conference.

Dwight Conquergood Award

Every year the board of PSi makes this award in honour of the memory of Dwight Conquergood to an individual whose work around cultural performance in some way carries a connection to Dwight's own practice. The award covers the cost of attending the annual PSi conference, including travel, accommodation and registration fees.

The winner of the Dwight Conquergood Award for 2012 is Rayya El Zein, City College of New York.

The runners up are Natalie Mathieson, University of Toronto, and Jennifer Capraru, Isoko Theatre.

Routledge Prize

The prize, sponsored by Routledge, was launched in collaboration with Performance Studies international

at PSi#15 to recognise research excellence at the postgraduate level. It will be awarded annually for a research presentation in the PSi conference academic programme by a graduate student registered at an

institution in the host country or region of the conference. Contenders will be nominated and the award judged by members of the PSi Board. The winner will receive £150 of Routledge books, plus a year's subscription to Performance Research.

Enrichment Bursary

The Enrichment Bursary award is to support new and unaffiliated artists/scholars/activists, particularly those

from groups under-represented, to attend the PSi conference and make a contribution.

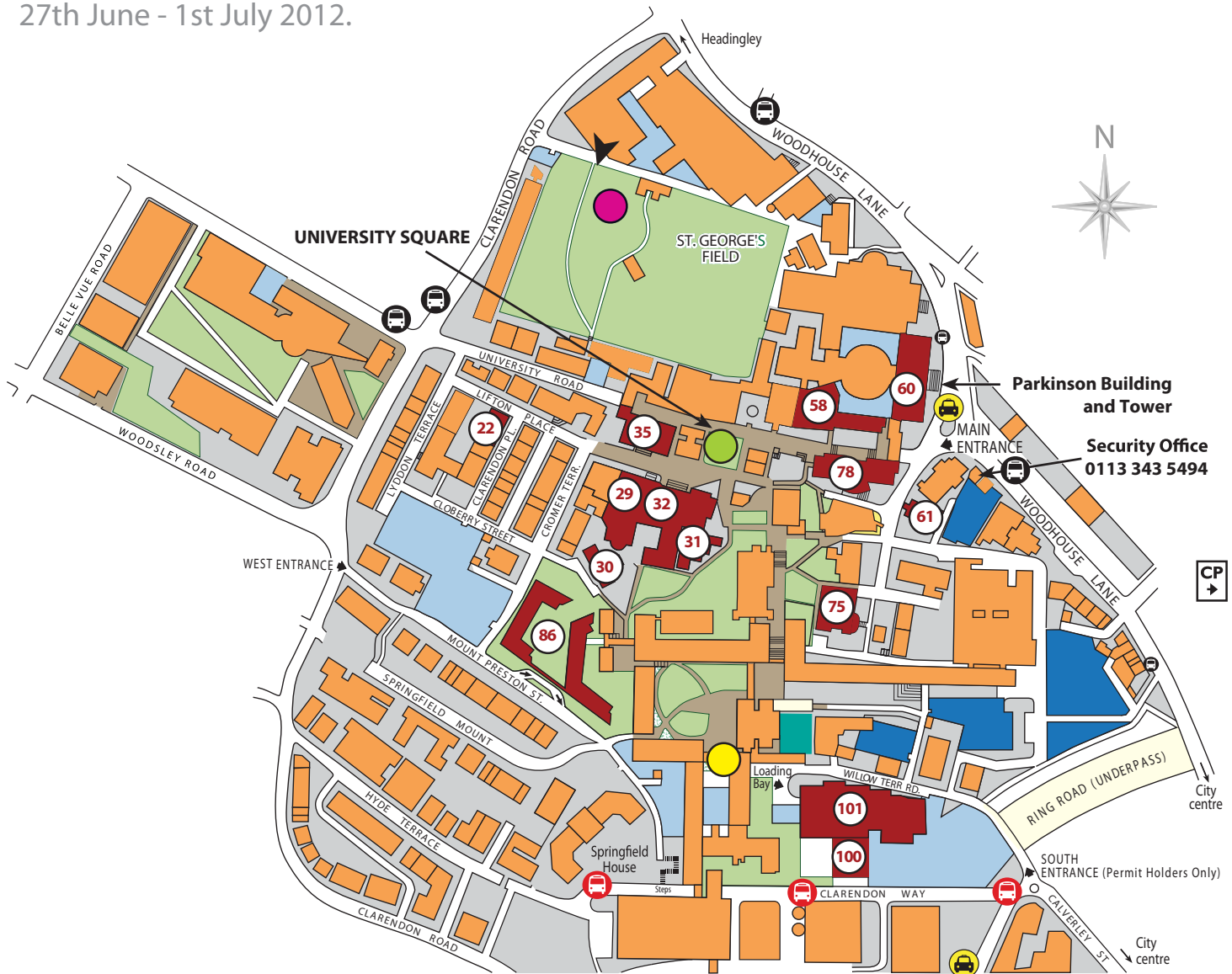
NOTES

NOTES

NOTES

PSi#18 2012

27th June - 1st July 2012.



Venues



- Baines Wing: (rooms 1.15, 2.37, Miall LT 2.34 & 3.06) 58
- Clothworkers Centenary Concert Hall 75
- Clothworkers South (rooms 2.03, G.14, G11) 35
- Computer Cluster - Parkinson B25 60
- Conference Auditorium 100
- Dance studio 31
- Michael Sadler building (Rooms LG10, LG15, LG17, LG19, Rupert Beckett LT & Banham Theatre) 78
- Music (rooms LT1, LT2, LT3, LT4 & Clothworkers Centenary Hall) 75
- Parkinson building (Rooms B.08, B.09, B.10, B.11, B.25, 1.08, Centenary Gallery & Room 18) 60

- Parkinson Court - Conference Hub 60
- Riley Smith Hall 32
- stage@leeds (Alec Clegg Studio, Dance studio) 31
- St Georges Field 32
- Student Union (Common Room, Hidden Café, Terrace Bar) 32
- The Edge 101
- TV studio 75
- University Square/Precinct 60
- Workshop Theatre 61

Budget Accommodation

- Storm Jameson Court 86
- Ellerslie Hall 22
- Lyddon Hall 30
- Refectory 29

Other Useful Information

- CityBus Stop 
- Taxi Rank 
- Bus Stop 